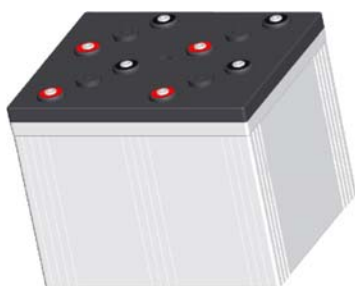


## UP-ST1500-2



Specification		
Nominal Voltage	2V	
Nominal Capacity (10HR)	1500.0AH	
Dimension	Length	403±3mm (15.87 inches)
	Width	354±3mm (13.94 inches)
	Container Height	339±3mm (13.35 inches)
	Total Height (with Terminal)	349±3mm (13.74 inches)
Approx Weight	Approx 94.0kg (207.3lbs)	
Terminal	T11	
Container Material	ABS	
Rated Capacity	1575.0AH/78.75A	(20hr, 1.80V/cell, 25°C/77°F)
	1500.0AH/150.0A	(10hr, 1.80V/cell, 25°C/77°F)
	1282.5AH/256.5A	(5hr, 1.75V/cell, 25°C/77°F)
	1125.0AH/375.0A	(3hr, 1.75V/cell, 25°C/77°F)
	900.0AH/900.0A	(1hr, 1.60V/cell, 25°C/77°F)
Max. Discharge Current	12000A (5s)	
Internal Resistance	Approx 0.35mΩ	
Operating Temperature Range	Discharge: -15~50°C (5~122°F)	
	Charge : 0~40°C (32~104°F)	
	Storage : -15~40°C (5~104°F)	
Nominal Operating Temperature Range	25±3°C (77±5°F)	
Cycle Use	Initial Charging Current less than 450.0A.Voltage. 2.4V~2.5.0V at 25°C (77°F) Temp. Coefficient -5mV/°C	
Standby Use	No limit on Initial Charging Current Voltage. 2.25V~2.3V at 25°C (77°F) Temp. Coefficient -3mV/°C	
Capacity affected by Temperature	40°C (104°F) 103%	
	25°C (77°F) 100%	
	0°C (32°F) 86%	
Self Discharge	Batteries may be stored for up to 6 months at 25°C (77°F) and then a freshening charge is required.	

Constant Current Discharge (Amperes) at 25°C (77°F)															
F.V/Time	5min	10min	15min	20min	30min	45min	1h	2h	3h	4h	5h	6h	8h	10h	20h
1.85V/cell	1750.1	1542.0	1355.4	1199.8	1002.8	814.4	664.8	445.5	340.5	274.5	235.0	206.8	167.6	143.3	76.0
1.80V/cell	\	1804.5	1544.6	1344.9	1101.8	875.9	708.2	468.8	369.0	283.9	244.5	215.5	175.7	150.0	78.8
1.75V/cell	\	\	1747.4	1490.3	1198.5	948.1	762.0	497.3	375.0	299.6	256.5	225.8	180.2	153.0	79.8
1.70V/cell	\	\	\	1638.9	1302.3	1012.7	806.7	525.0	391.5	312.0	266.9	233.8	186.0	156.8	81.5
1.65V/cell	\	\	\	1732.3	1364.6	1052.7	838.2	542.3	404.0	321.4	274.2	238.0	189.4	159.3	82.8
1.60V/cell	\	\	\	\	1492.6	1138.7	900.0	569.3	421.0	334.9	286.9	248.5	196.5	164.4	85.4

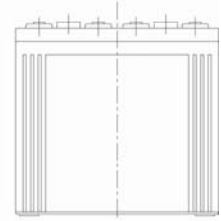
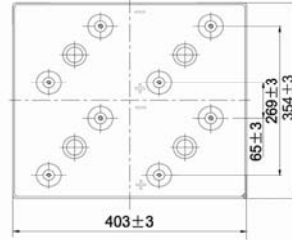
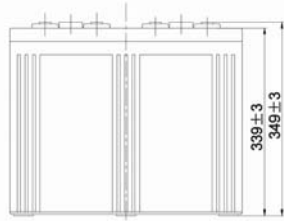
Constant Power Discharge (Watts) at 25°C (77°F)															
F.V/Time	5min	10min	15min	20min	30min	45min	1h	2h	3h	4h	5h	6h	8h	10h	20h
1.85V/cell	3217.3	2863.7	2542.7	2273.7	1921.3	1573.6	1289.0	869.6	667.1	539.5	463.1	408.5	332.6	284.9	151.3
1.80V/cell	\	3312.1	2858.9	2511.3	2078.9	1679.3	1365.8	908.9	718.9	554.9	479.5	424.1	347.6	297.9	156.6
1.75V/cell	\	\	3194.8	2756.4	2242.8	1800.4	1463.0	960.6	727.7	583.7	501.4	442.9	355.7	303.5	158.4
1.70V/cell	\	\	\	3008.6	2423.6	1916.1	1543.8	1012.1	758.3	606.6	520.8	457.9	366.8	310.7	161.6
1.65V/cell	\	\	\	3156.3	2518.7	1973.8	1592.7	1039.3	779.2	622.5	533.2	464.8	372.5	315.3	164.2
1.60V/cell	\	\	\	\	2735.9	2123.6	1701.0	1085.8	808.3	646.6	556.1	483.8	385.7	324.8	168.9



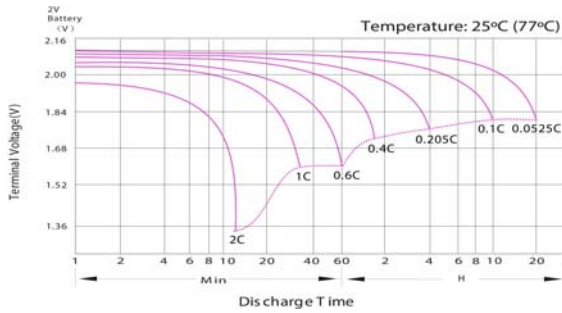
**UP-ST1500-2**

**Dimensions**

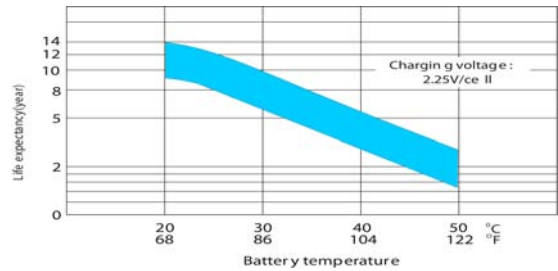
■ T11 Terminal  
Unit: mm [inches]



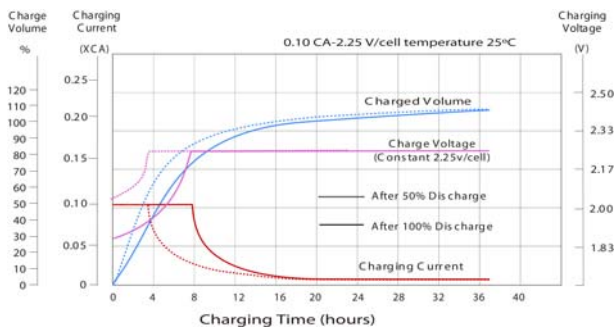
**Discharge Characteristics**



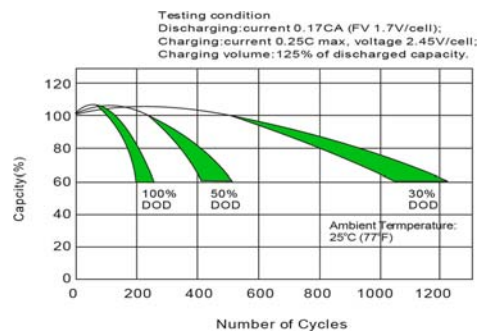
**Effect of Temperature on Long Term Float Life**



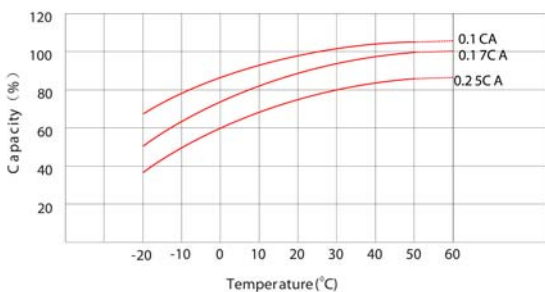
**Float Charging Characteristics**



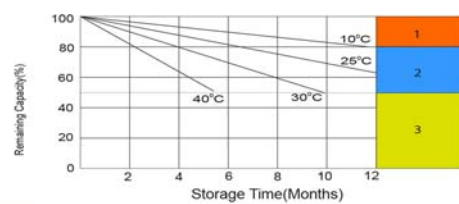
**Cycle Life in Relation to Depth of Discharge**



**Temperature Effects in Relation to Battery Capacity**



**Self Discharge Characteristics**



- 1 No supplementary charge required (Carry out supplementary charge before use if 100% capacity is required)
- 2 Supplementary charge required before use. Optional charging way as below:  
1. Charged for above 3 days at limited current 0.25CA and constant voltage 2.25V/cell.  
2. Charged for above 20 hours at limited current 0.25CA and constant voltage 2.45V/cell.  
3. Charged for 8-10 hours at limited current 0.05CA.
- 3 Supplementary charge may often fail to recover the capacity. The battery should never be left standing till this is reached.



Poligono industrial La Dehesa  
C/ Dehesa Vieja, nº2 Nave 16  
28052 Madrid (Spain)  
Tel. (+34) 918 021 649  
Fax. (+34) 917 750 542  
info@masterbattery.es

