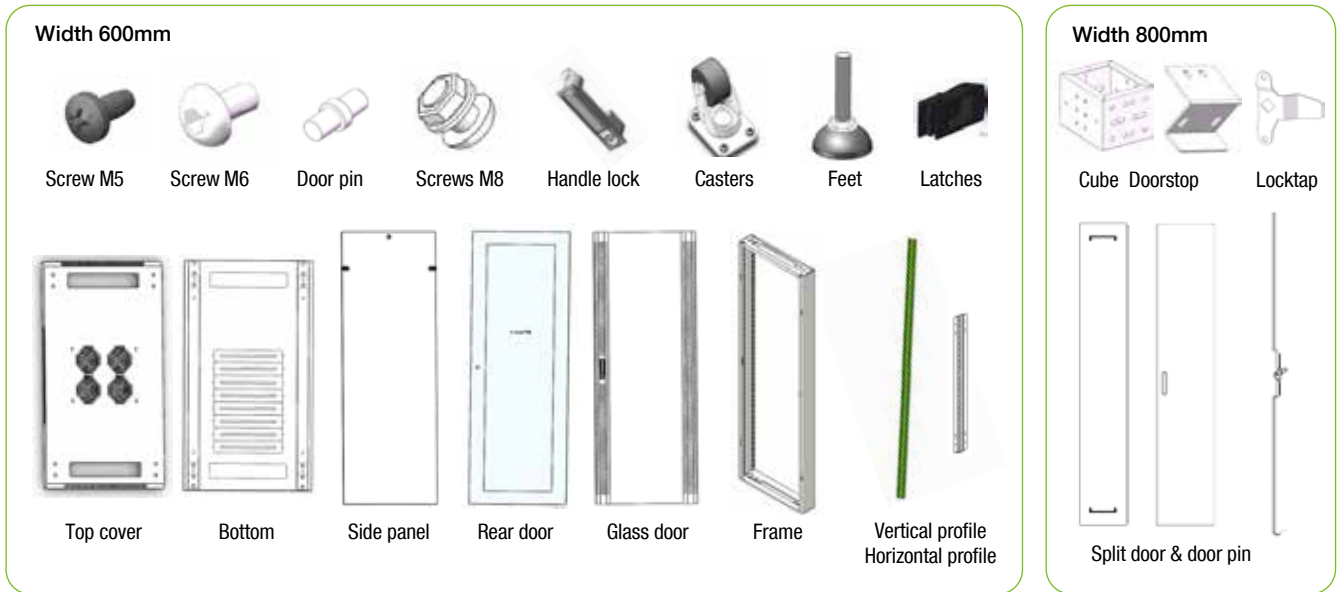
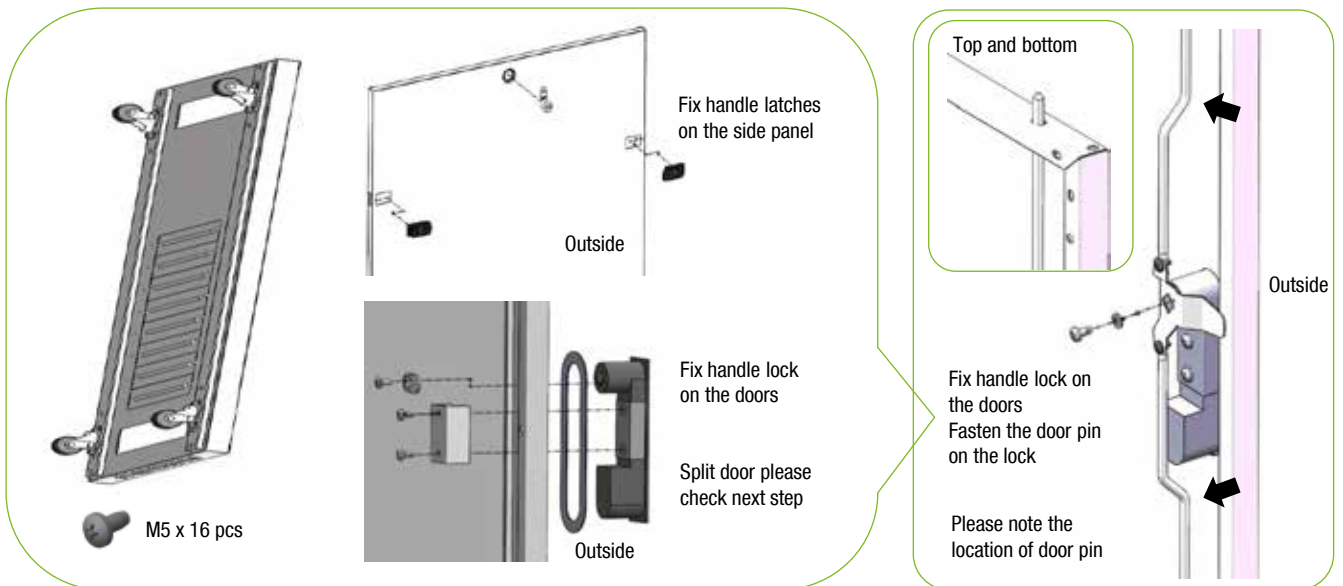


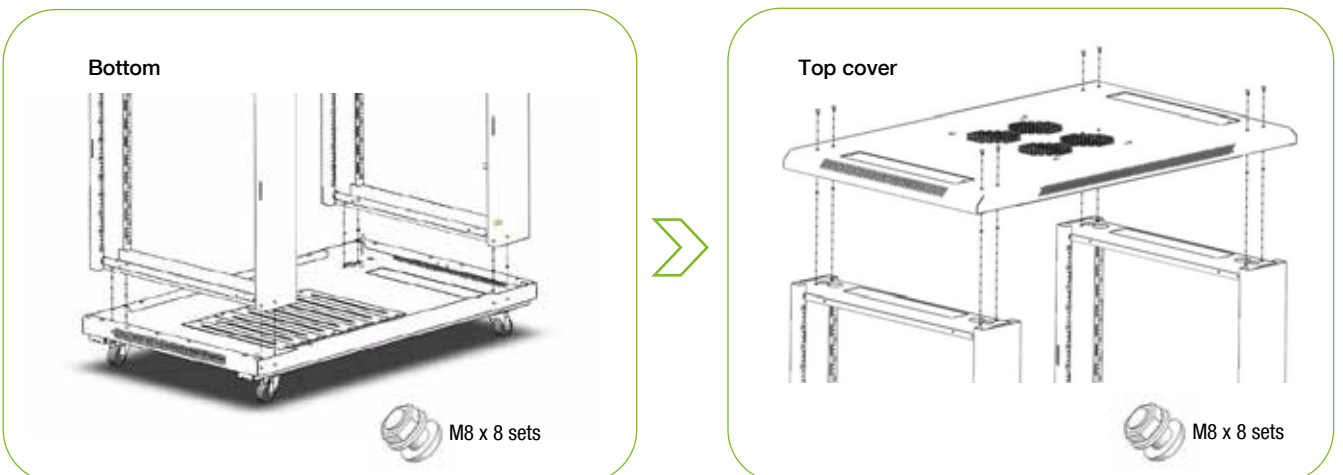
### Assembly parts list



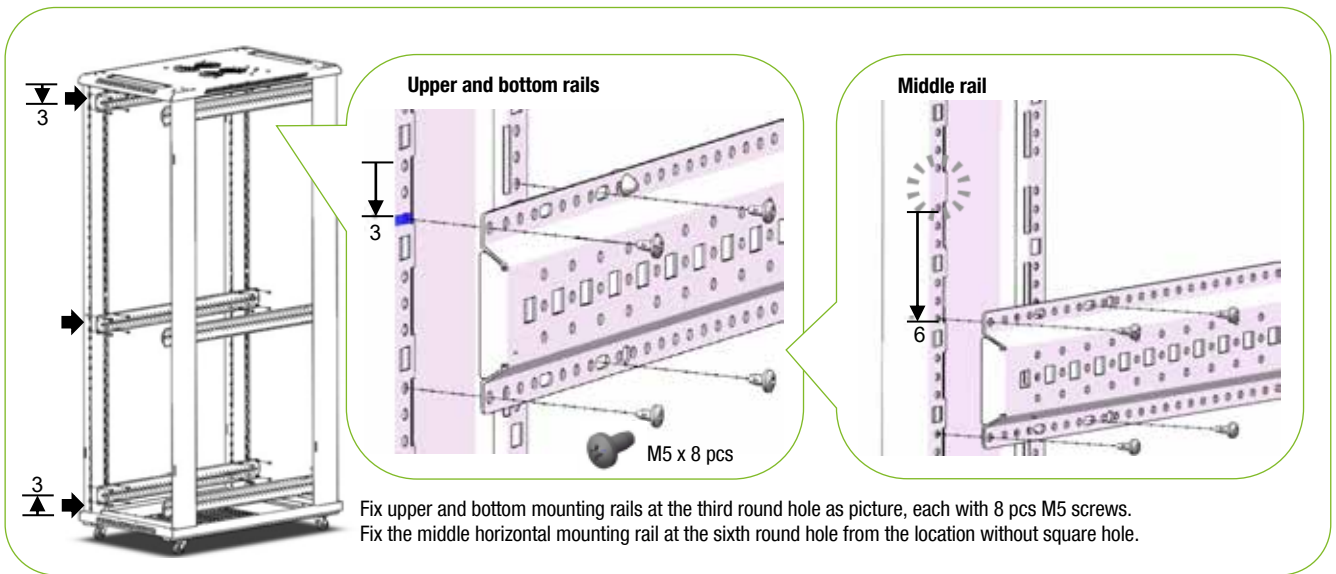
### Step 1: Fix 4 pcs casters with M5 screw on the bottom panel; Fix the latch and lock;



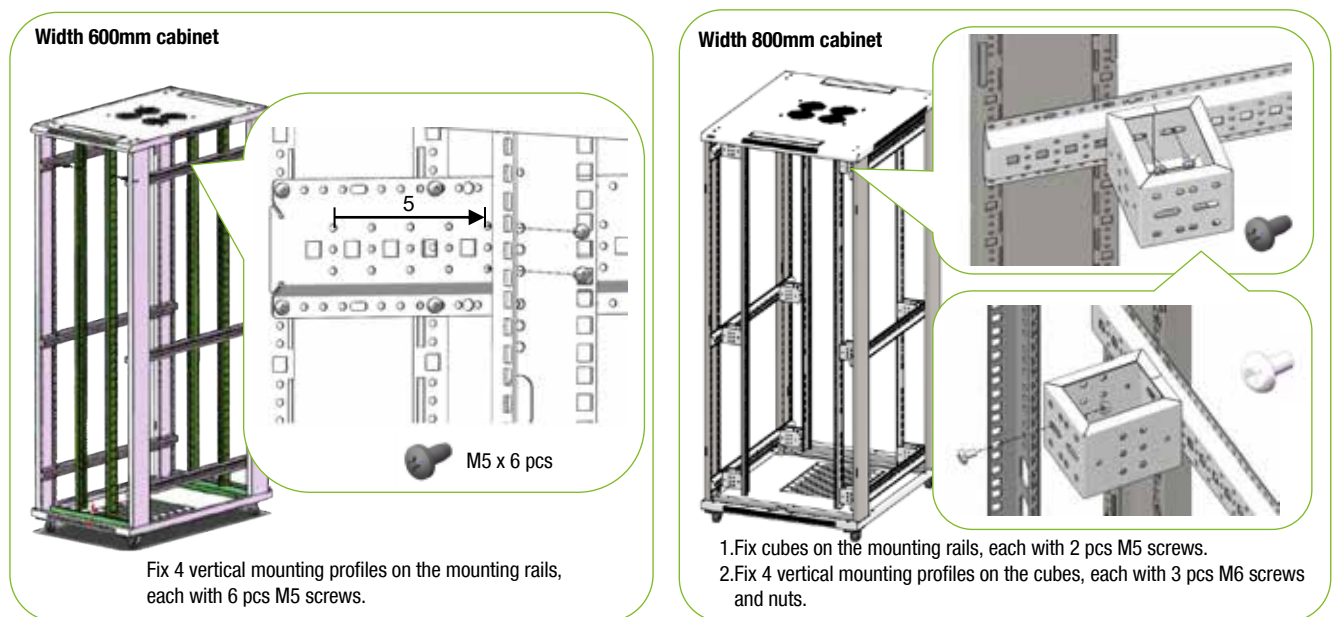
### Step 2: Fix the top cover and bottom on frames with M8 screw;



Step 3: Fix the horizontal mounting rails with M5 screw;



Step 4: Fix the mounting profile with M5 screw; 800mm cabinet fixed the cube first.



Step 5: Fix doors and side panels

